

DAMAN

Shirt, DIOR HOMME



162

NICK REA

HEIGHT: 188 CHEST: 93 WAIST: 81 HAIR: BROWN EYES: BLUE / GREEN SUIT: 48 SHOES: 44

DAMAN



NICK REA

HEIGHT: 188 CHEST: 93 WAIST: 81 HAIR: BROWN EYES: BLUE / GREEN SUIT: 48 SHOES: 44



DAMAN



NICK REA

HEIGHT: 188 CHEST: 93 WAIST: 81 HAIR: BROWN EYES: BLUE / GREEN SUIT: 48 SHOES: 44

# DAMAN



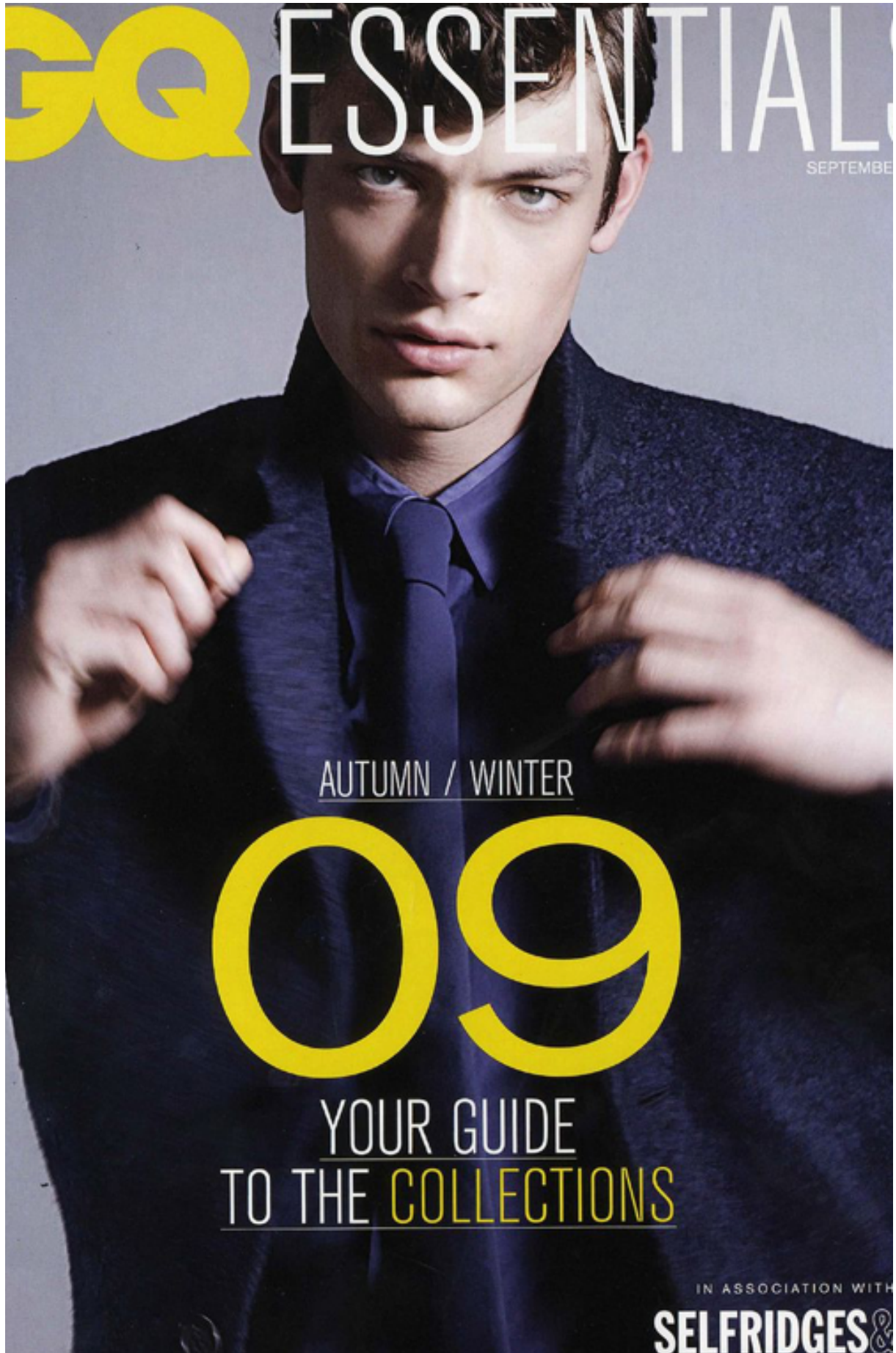
160

NICK REA

HEIGHT: 188 CHEST: 93 WAIST: 81 HAIR: BROWN EYES: BLUE / GREEN SUIT: 48 SHOES: 44



DAMAN



NICK REA

HEIGHT: 188 CHEST: 93 WAIST: 81 HAIR: BROWN EYES: BLUE / GREEN SUIT: 48 SHOES: 44

DAMAN



# GMIARO

MAGAZINE

*special*

www.gmaromagazine.com  
FEBRUARY 2020

LIFE IN  
PLASTIC  
LEYLA MAY

**PANTONE  
BLUE**  
KYSSA SVETLANA

SCULPTURE  
EDITORIAL  
ELVIRA ÁLVAREZ  
TORRECILLA



132<sup>+</sup>  
Pages of  
Creative  
Fashion

MONOCHROME  
PAPIILLON  
RÉMY TORTOSA

# NICK REA

BY MALC STONE

NICK REA

HEIGHT: 188 CHEST: 93 WAIST: 81 HAIR: BROWN EYES: BLUE / GREEN SUIT: 48 SHOES: 44



DAMAN



NICK REA

HEIGHT: 188 CHEST: 93 WAIST: 81 HAIR: BROWN EYES: BLUE / GREEN SUIT: 48 SHOES: 44

DAMAN



NICK REA

HEIGHT: 188 CHEST: 93 WAIST: 81 HAIR: BROWN EYES: BLUE / GREEN SUIT: 48 SHOES: 44



DAMAN

GMAROMagazine

GMARO MAGAZINE

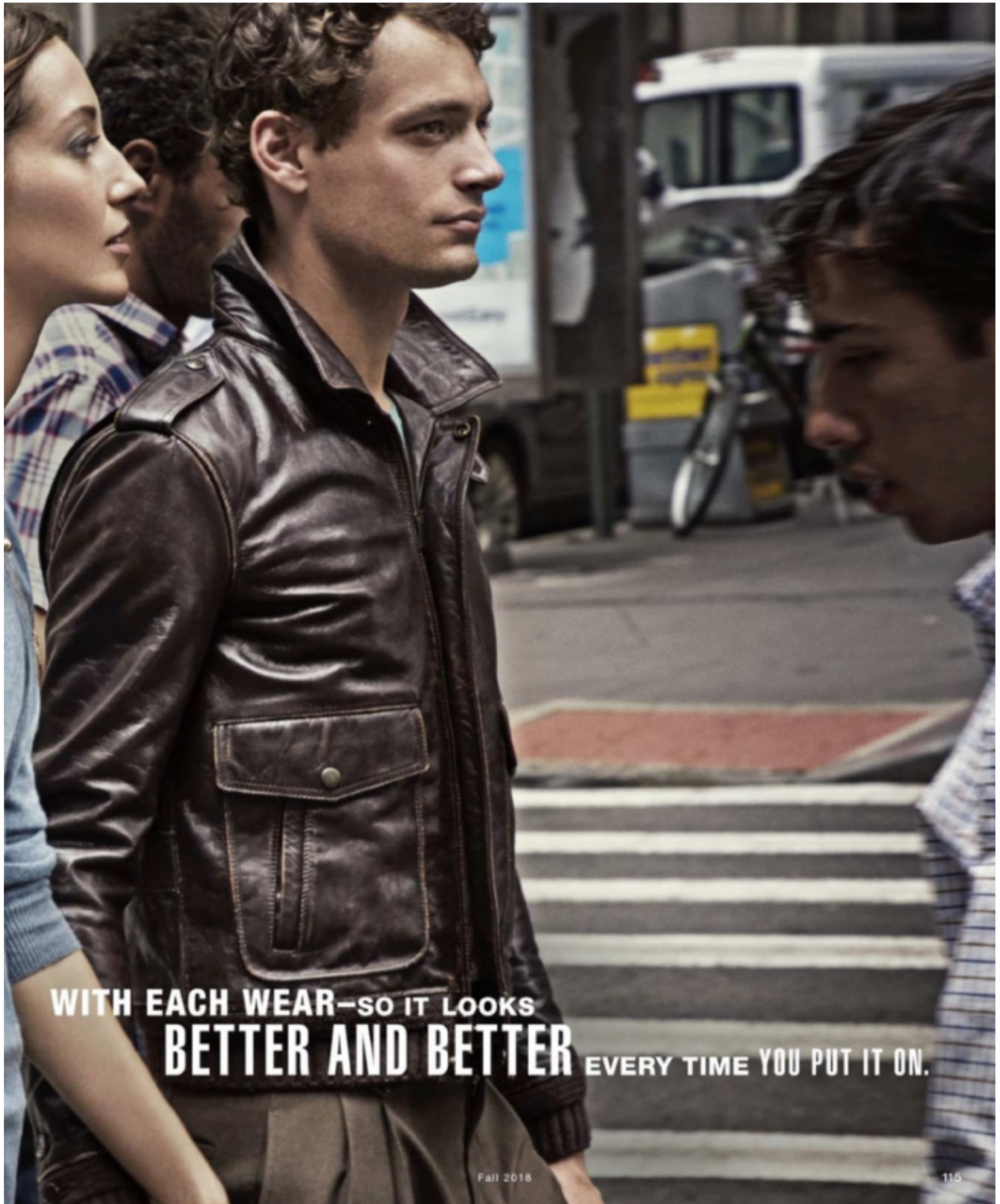


16

NICK REA

HEIGHT: 188 CHEST: 93 WAIST: 81 HAIR: BROWN EYES: BLUE / GREEN SUIT: 48 SHOES: 44

DAMAN



WITH EACH WEAR—SO IT LOOKS  
**BETTER AND BETTER** EVERY TIME YOU PUT IT ON.

Fall 2018

115

NICK REA

HEIGHT: 188 CHEST: 93 WAIST: 81 HAIR: BROWN EYES: BLUE / GREEN SUIT: 48 SHOES: 44





*On him:* Coat, shirt, and trousers by LOUIS VUITTON; louisvuitton.com. T-shirt (\$98) by M. SINGER; nordstrom.com. *On her:* Jacket (\$1,700) by JOHN ELLIOTT; johnelliott.co. T-shirt (\$78) by AG; agjeans.com. Skirt (\$740) by OFFICINE GÉNÉRALE; 212-249-4053. Charm necklace (\$980) by MAYA BRENNER; mayabrenner.com. Gold ring (\$4,400), gold chain necklace (\$2,200), and gold ball pendant (\$1,400) by SPINELLI KILCOLLIN; spinellikilcollin.com.

NICK REA

HEIGHT: 188 CHEST: 93 WAIST: 81 HAIR: BROWN EYES: BLUE / GREEN SUIT: 48 SHOES: 44

DAMAN



NICK REA

HEIGHT: 188 CHEST: 93 WAIST: 81 HAIR: BROWN EYES: BLUE / GREEN SUIT: 48 SHOES: 44



DAMAN



157

NICK REA

HEIGHT: 188 CHEST: 93 WAIST: 81 HAIR: BROWN EYES: BLUE / GREEN SUIT: 48 SHOES: 44



# DAMAN



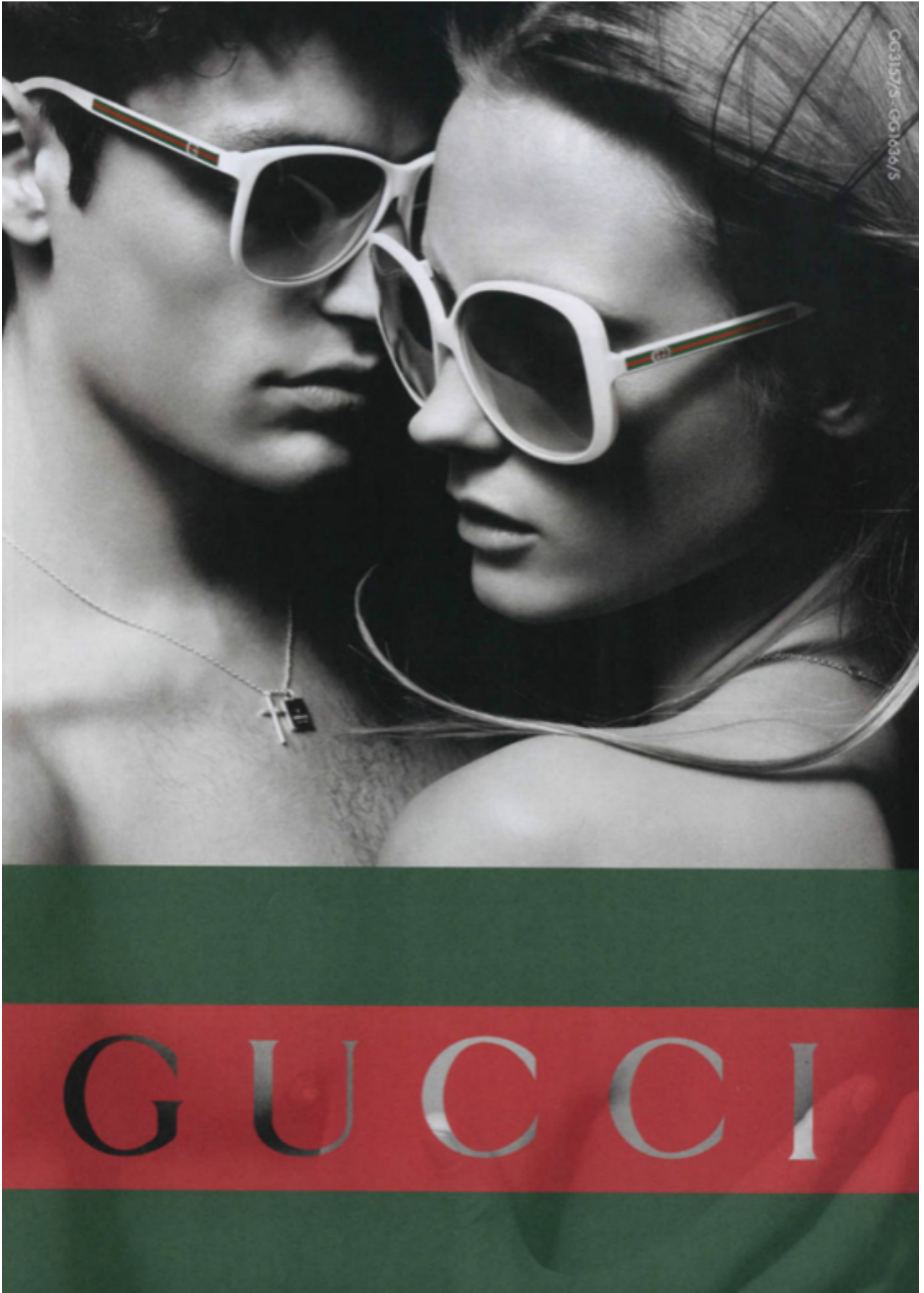
156

## NICK REA

HEIGHT: 188 CHEST: 93 WAIST: 81 HAIR: BROWN EYES: BLUE / GREEN SUIT: 48 SHOES: 44



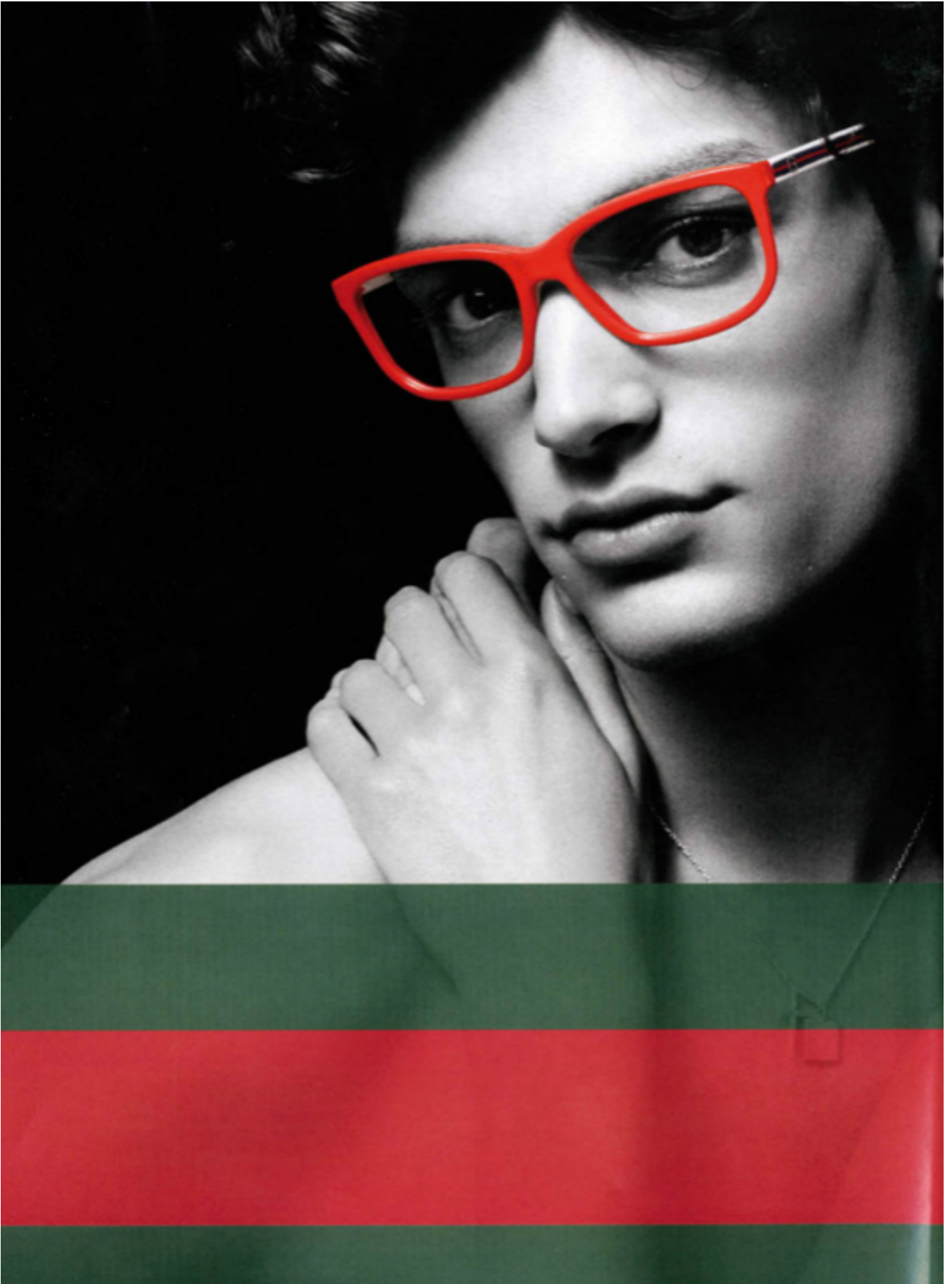
DAMAN



NICK REA

HEIGHT: 188 CHEST: 93 WAIST: 81 HAIR: BROWN EYES: BLUE / GREEN SUIT: 48 SHOES: 44

DAMAN



NICK REA

HEIGHT: 188 CHEST: 93 WAIST: 81 HAIR: BROWN EYES: BLUE / GREEN SUIT: 48 SHOES: 44



DAMAN



# Kaleidoscope World

photography  
Matthew Stansfield

styling  
Bryan Harrop

grooming  
Carol McKitty at Boss

model  
Nick Ria at Boss / Models1

NICK REA

HEIGHT: 188 CHEST: 93 WAIST: 81 HAIR: BROWN EYES: BLUE / GREEN SUIT: 48 SHOES: 44

**THE**  
**REA**  
**DEAL**

*Photography* Jay Mawson  
*Styling* Becky Bowyer  
*Grooming* Carol McKirry  
*Model* Nick Rea @ Boss Model Management  
Shot at FiveFour Studios, Manchester



REA DEAL

NICK REA

HEIGHT: 188 CHEST: 93 WAIST: 81 HAIR: BROWN EYES: BLUE / GREEN SUIT: 48 SHOES: 44



DAMAN



NICK REA

HEIGHT: 188 CHEST: 93 WAIST: 81 HAIR: BROWN EYES: BLUE / GREEN SUIT: 48 SHOES: 44



DAMAN



NICK REA

HEIGHT: 188 CHEST: 93 WAIST: 81 HAIR: BROWN EYES: BLUE / GREEN SUIT: 48 SHOES: 44





### CHANGEZ POUR LA VESTE DE VELOURS LISSÉ

→ Pourquoi en velours ? Parce que c'est soyeux, chatoyant, chaud et précieux. Voilà des qualités esthétiques et pratiques dont vous ne saurez vous passer cet hiver. Vous vous la jouerez aristo romantique ou écrivain mondain, smart mais pas over dressed, jamais clinquant. Vous brillerez par l'esprit et non par l'habit.

C'est pourquoi vous n'aurez aucun scrupule à glisser un petit pull en laine tricotée un peu rêche sous le velours.

Le + : décorez votre cou d'un foulard en soie subrepticement noué sous le col. Tout est une question de mesure.

→ Veste 1990 €, pull 650 €, pantalon 470 € et foulard 210 € Gucci

→ Styliste David Lamb  
Coiffure et maquillage  
Maarit Niemi @ D+V  
Assistante mode  
Georgia Donovan  
Mannequins Jérémy Barrois @ News  
Peter Badenhop,  
Chris Kightley  
& Nick Rea @ Models 1  
Décor Angus Buchanan  
Production Londres  
Nancy Housham  
@ Ellison Lee

## NICK REA

HEIGHT: 188 CHEST: 93 WAIST: 81 HAIR: BROWN EYES: BLUE / GREEN SUIT: 48 SHOES: 44





## INVESTISSEZ DANS LE COSTUME GRIS

→ Il est le costume idéal car il s'adapte à toutes les situations et à toutes les carnations. Moins formel et plus flatteur au teint que le noir, vous l'agrémenterez d'une pochette de couleur ou d'une chemise imprimée graphique, à pois par exemple. Le détail 2012/2013 : choisir une veste à deux boutons au revers ni trop larges ni trop étroits.

→ Costume, prix sur demande, et chemise 200 € ZZegna

→ Costume 1 850 €, chemise 215 €, et pochette 35 € Dunhill

→ Veste 1 320 €, chemise 210 € et pantalon 470 € Salvatore Ferragamo

→ Veste 1 195 €, chemise 450 € et pantalon 695 € Barberry Prorsum

## NICK REA

HEIGHT: 188 CHEST: 93 WAIST: 81 HAIR: BROWN EYES: BLUE / GREEN SUIT: 48 SHOES: 44



DAMAN

SWEATSHIRT GENERAL  
IDEA, PANTS DE NEW  
YORK.  
HAIR  
JACKET JOHN  
VARRIATO, SHIRT  
STONE ISLAND  
SHADOW PROJECT



NICK REA

HEIGHT: 188 CHEST: 93 WAIST: 81 HAIR: BROWN EYES: BLUE / GREEN SUIT: 48 SHOES: 44

# DAMAN



T-shirt, TOM FORD | Trousers, LOUIS VUITTON | Sunglasses, model's own

163

## NICK REA

HEIGHT: 188 CHEST: 93 WAIST: 81 HAIR: BROWN EYES: BLUE / GREEN SUIT: 48 SHOES: 44



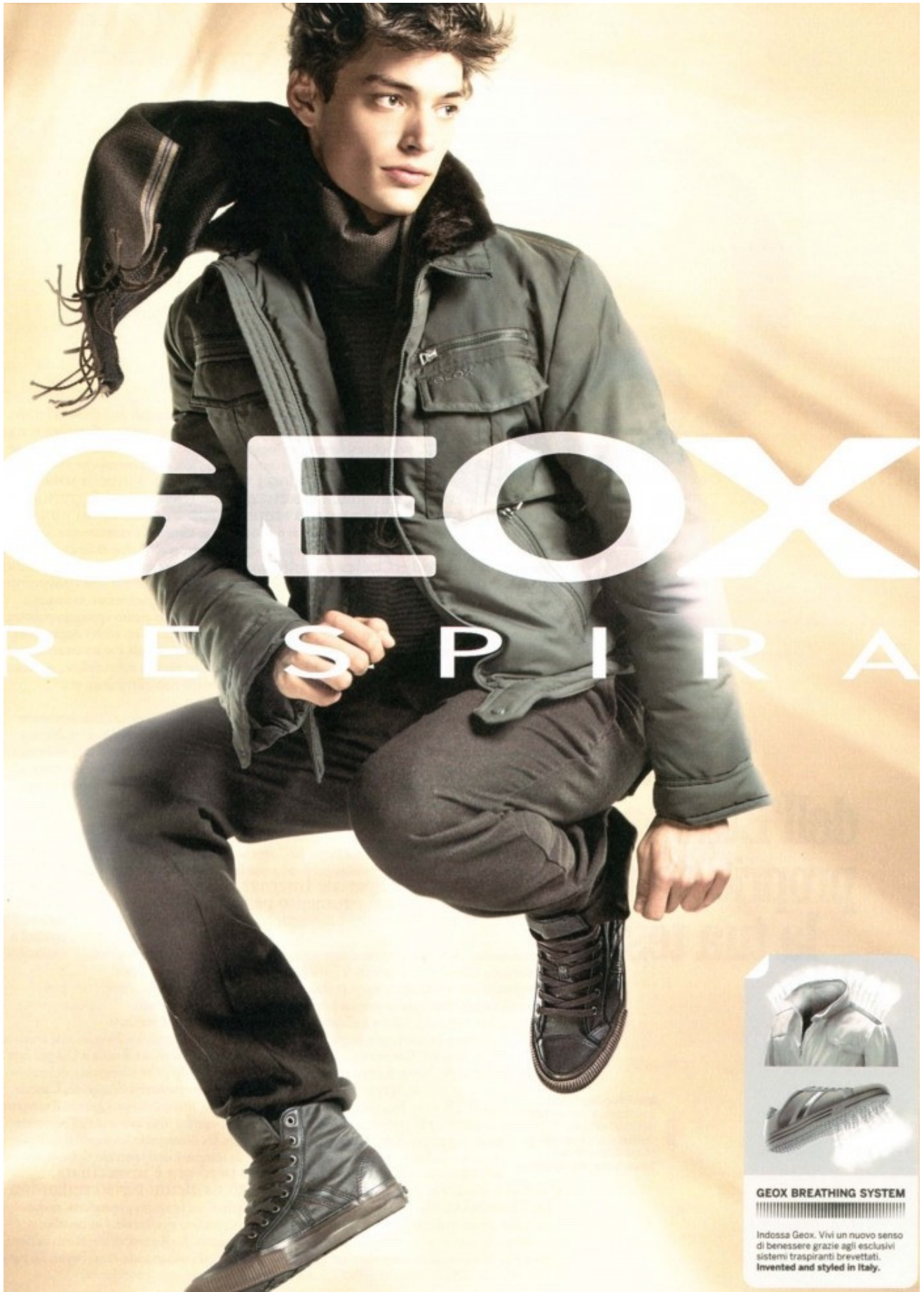
DAMAN



NICK REA

HEIGHT: 188 CHEST: 93 WAIST: 81 HAIR: BROWN EYES: BLUE / GREEN SUIT: 48 SHOES: 44

DAMAN

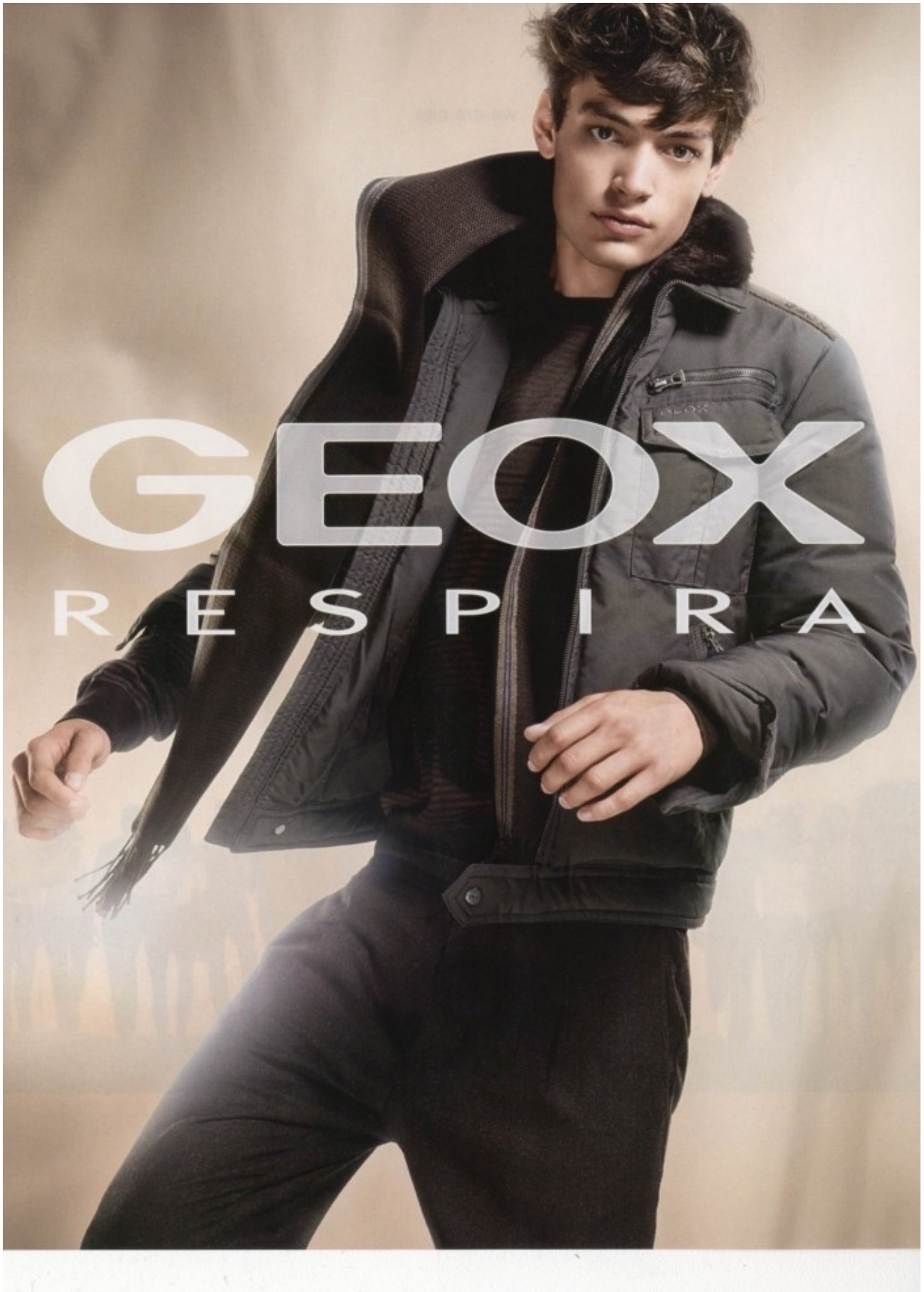


NICK REA

HEIGHT: 188 CHEST: 93 WAIST: 81 HAIR: BROWN EYES: BLUE / GREEN SUIT: 48 SHOES: 44



DAMAN



NICK REA

HEIGHT: 188 CHEST: 93 WAIST: 81 HAIR: BROWN EYES: BLUE / GREEN SUIT: 48 SHOES: 44

DAMAN



NICK REA

HEIGHT: 188 CHEST: 93 WAIST: 81 HAIR: BROWN EYES: BLUE / GREEN SUIT: 48 SHOES: 44



DAMAN



NICK REA

HEIGHT: 188 CHEST: 93 WAIST: 81 HAIR: BROWN EYES: BLUE / GREEN SUIT: 48 SHOES: 44

DAMAN



NICK REA

HEIGHT: 188 CHEST: 93 WAIST: 81 HAIR: BROWN EYES: BLUE / GREEN SUIT: 48 SHOES: 44



DAMAN



NICK REA

HEIGHT: 188 CHEST: 93 WAIST: 81 HAIR: BROWN EYES: BLUE / GREEN SUIT: 48 SHOES: 44

DAMAN



NICK REA

HEIGHT: 188 CHEST: 93 WAIST: 81 HAIR: BROWN EYES: BLUE / GREEN SUIT: 48 SHOES: 44



DAMAN



NICK REA

HEIGHT: 188 CHEST: 93 WAIST: 81 HAIR: BROWN EYES: BLUE / GREEN SUIT: 48 SHOES: 44

DAMAN



NICK REA

HEIGHT: 188 CHEST: 93 WAIST: 81 HAIR: BROWN EYES: BLUE / GREEN SUIT: 48 SHOES: 44



# DAMAN



左頁: HERMES皮革配針織開胸外套 ;  
ACNE恤衫及長褲。  
右頁: DIOR HOMME恤衫、針織背心、  
西服外套、西褲、涼鞋及皮袋。

**Photos:** Jorgen Gornnes  
**Styling & Text:** Tracy On  
**Hair:** Agnes Gulbranden  
**Model:** Nick Rea from IMG and Heartbreak  
**Photographic assistant:** Kjell Ruben  
Strom & Christian Bakstad  
**Digital Post-production:** Kasia Krot from  
Happyfresh  
Location is courtesy of Alexis Faury.

## NICK REA

HEIGHT: 188 CHEST: 93 WAIST: 81 HAIR: BROWN EYES: BLUE / GREEN SUIT: 48 SHOES: 44

DAMAN



NICK REA

HEIGHT: 188 CHEST: 93 WAIST: 81 HAIR: BROWN EYES: BLUE / GREEN SUIT: 48 SHOES: 44



DAMAN



NICK REA

HEIGHT: 188 CHEST: 93 WAIST: 81 HAIR: BROWN EYES: BLUE / GREEN SUIT: 48 SHOES: 44

PRE-SHOW ISSUE

FN

Men's archetypal boots are **subtly debauched** for fall. The Turstan style from Mr. B's for ALDO toughens up the dapper brogue.

# Suited & Booted

## COOL KIDS

Prince George. North West. How little celebs play a big role in shoes

## CORPORATE KILLERS

Ten top execs on what will destroy your company's culture — and ways to improve it

## GETTING FRISKY

Why juniors' brands are cheering about next season

NICK REA

HEIGHT: 188 CHEST: 93 WAIST: 81 HAIR: BROWN EYES: BLUE / GREEN SUIT: 48 SHOES: 44



DAMAN

Get

ROBERTO VASI  
leather combat  
boots. Sandro jacket,  
Ted Baker shirt, Ami  
Paris jeans, stylist's  
own neckwear (worn  
throughout)

NICK REA

HEIGHT: 188 CHEST: 93 WAIST: 81 HAIR: BROWN EYES: BLUE / GREEN SUIT: 48 SHOES: 44

DAMAN



U.S. NEWCOMER

Deveaux

» This New York-based brand has been unveiled for the fall season, with luxurious separates and tailored clothes made from cashmere, suede, and shearling in relaxed styles. The cozy cashmere cardigan and jogging pants shown here

NICK REA

HEIGHT: 188 CHEST: 93 WAIST: 81 HAIR: BROWN EYES: BLUE / GREEN SUIT: 48 SHOES: 44



DAMAN



NICK REA

HEIGHT: 188 CHEST: 93 WAIST: 81 HAIR: BROWN EYES: BLUE / GREEN SUIT: 48 SHOES: 44



# DAMAN

and shirt, LOUIS VUITTON | Trousers, FENDI



NICK REA

HEIGHT: 188 CHEST: 93 WAIST: 81 HAIR: BROWN EYES: BLUE / GREEN SUIT: 48 SHOES: 44



DAMAN

MA

White, Blue Stripe



NICK REA

HEIGHT: 188 CHEST: 93 WAIST: 81 HAIR: BROWN EYES: BLUE / GREEN SUIT: 48 SHOES: 44



DAMAN



NICK REA

HEIGHT: 188 CHEST: 93 WAIST: 81 HAIR: BROWN EYES: BLUE / GREEN SUIT: 48 SHOES: 44



DAMAN

NICK REA

HEIGHT: 188 CHEST: 93 WAIST: 81 HAIR: BROWN EYES: BLUE / GREEN SUIT: 48 SHOES: 44