

DAMAN



LAIAN

HEIGHT: 178 CHEST: 80 WAIST: 60 HAIR: BROWN EYES: GREEN SUIT: SHOES: 40

DAMAN



LAIAN

HEIGHT: 178 CHEST: 80 WAIST: 60 HAIR: BROWN EYES: GREEN SUIT: SHOES: 40

DAMAN



LAISAN

HEIGHT: 178 CHEST: 80 WAIST: 60 HAIR: BROWN EYES: GREEN SUIT: SHOES: 40

DAMAN



MARC JACOBS
red wool coat.
stripe ruffle blouse.
purple neck tie.
red wool scarf.
black leather pants.
velvet lace-up shoes.
black felt hat.

LAISAN

HEIGHT: 178 CHEST: 80 WAIST: 60 HAIR: BROWN EYES: GREEN SUIT: SHOES: 40

DAMAN



LAISAN

HEIGHT: 178 CHEST: 80 WAIST: 60 HAIR: BROWN EYES: GREEN SUIT: SHOES: 40

DAMAN



LAISAN

HEIGHT: 178 CHEST: 80 WAIST: 60 HAIR: BROWN EYES: GREEN SUIT: SHOES: 40

DAMAN



LAISAN

HEIGHT: 178 CHEST: 80 WAIST: 60 HAIR: BROWN EYES: GREEN SUIT: SHOES: 40

DAMAN



LAISAN

HEIGHT: 178 CHEST: 80 WAIST: 60 HAIR: BROWN EYES: GREEN SUIT: SHOES: 40

DAMAN



LAISAN

HEIGHT: 178 CHEST: 80 WAIST: 60 HAIR: BROWN EYES: GREEN SUIT: SHOES: 40

DAMAN



LAIAN

HEIGHT: 178 CHEST: 80 WAIST: 60 HAIR: BROWN EYES: GREEN SUIT: SHOES: 40

DAMAN



LAIAN

HEIGHT: 178 CHEST: 80 WAIST: 60 HAIR: BROWN EYES: GREEN SUIT: SHOES: 40

DAMAN



LAISAN

HEIGHT: 178 CHEST: 80 WAIST: 60 HAIR: BROWN EYES: GREEN SUIT: SHOES: 40

DAMAN



LAY IT
OUT

動感的細節通
都最吸引眼球，百
裙配襯金屬eyelet
靴打造搖滾的造
，頓時製造搖曳的
力。

ORTS 1961 白色羊毛
領衫；DIOR 月亮耳環，
色格仔絨料百褶裙及
色百褶紗裙；SERGIO
DSSI 紅色eyelet 長靴。

LAISAN

HEIGHT: 178 CHEST: 80 WAIST: 60 HAIR: BROWN EYES: GREEN SUIT: SHOES: 40

DAMAN



LAI SAN

HEIGHT: 178 CHEST: 80 WAIST: 60 HAIR: BROWN EYES: GREEN SUIT: SHOES: 40

DAMAN

MARC JACOBS

stripe ruffle blouse.
black rosette neck tie.
turquoise scarf.
yellow wool pants.
black and yellow lace-up shoes.
wide brim hat.



LAISAN

HEIGHT: 178 CHEST: 80 WAIST: 60 HAIR: BROWN EYES: GREEN SUIT: SHOES: 40

DAMAN



LAIAN

HEIGHT: 178 CHEST: 80 WAIST: 60 HAIR: BROWN EYES: GREEN SUIT: SHOES: 40

DAMAN



LAIAN

HEIGHT: 178 CHEST: 80 WAIST: 60 HAIR: BROWN EYES: GREEN SUIT: SHOES: 40

DAMAN



LAISAN

HEIGHT: 178 CHEST: 80 WAIST: 60 HAIR: BROWN EYES: GREEN SUIT: SHOES: 40

DAMAN



LAISAN

HEIGHT: 178 CHEST: 80 WAIST: 60 HAIR: BROWN EYES: GREEN SUIT: SHOES: 40

DAMAN



EMPOWER
DRESSING

百褶裙在上班服中佔有重要的地位，加穿一件闊肩西裝外套，道盡時下都會女性在職場上的野心。

LANVIN深藍色樽領上衣；LORO PIANA條子恤衫；PORTS 1961啡色印花西裝外套；BALENCIAGA百褶半截裙，絨料手套及深藍色長靴；AMBUSH金色鎖鑰耳環(from I.T)。

LAISAN

HEIGHT: 178 CHEST: 80 WAIST: 60 HAIR: BROWN EYES: GREEN SUIT: SHOES: 40

DAMAN



BALANCE
MAKES
PERFECT

摺褶可以製造出強大的volume而成為造型中的焦點，只要搭配少量飾物，稍為分散視覺上的累贅，就能抓住造型中平衡的竅門。

GUCCI百褶荷葉連身裙；
GIVENCHY菱形戒指。

Model: Laisan@Model Genesis
Make-up: Kam Yiu
Hair: Ziv Lau

LAISAN

HEIGHT: 178 CHEST: 80 WAIST: 60 HAIR: BROWN EYES: GREEN SUIT: SHOES: 40



LACK THE RULE

百褶裙總是給
文靜保守的感覺，
不配襯用色大膽的
衣或飾物去打破悶
？

ALENCIAGA 熒光綠
衣，爬山扣頸鏈，黑色
革粗腰帶及絨料長靴褲；
ANVIN 摺褶 deep V 裙；
VENCHY 釘形耳環。

LAISAN

HEIGHT: 178 CHEST: 80 WAIST: 60 HAIR: BROWN EYES: GREEN SUIT: SHOES: 40

more/Make up

text / Angela Fung

photo / Kelly

model / Laisan N. @Model Genesis

make up & hair / Echo Wong

design / Clara

Rusty Copper

紅眼妝依然是來季彩妝的重點，不過用色方面就由原本粉嫩的紅調轉為充滿古銅味道的鐵銹色。想簡單一點的話，大可從橙銅色唇妝入手，為彩妝增添新意。

040 / more

LAISAN

HEIGHT: 178 CHEST: 80 WAIST: 60 HAIR: BROWN EYES: GREEN SUIT: SHOES: 40

DAMAN

Millie's

X

GO:FE:FE



LAISAN

HEIGHT: 178 CHEST: 80 WAIST: 60 HAIR: BROWN EYES: GREEN SUIT: SHOES: 40

DAMAN

Millie's

X

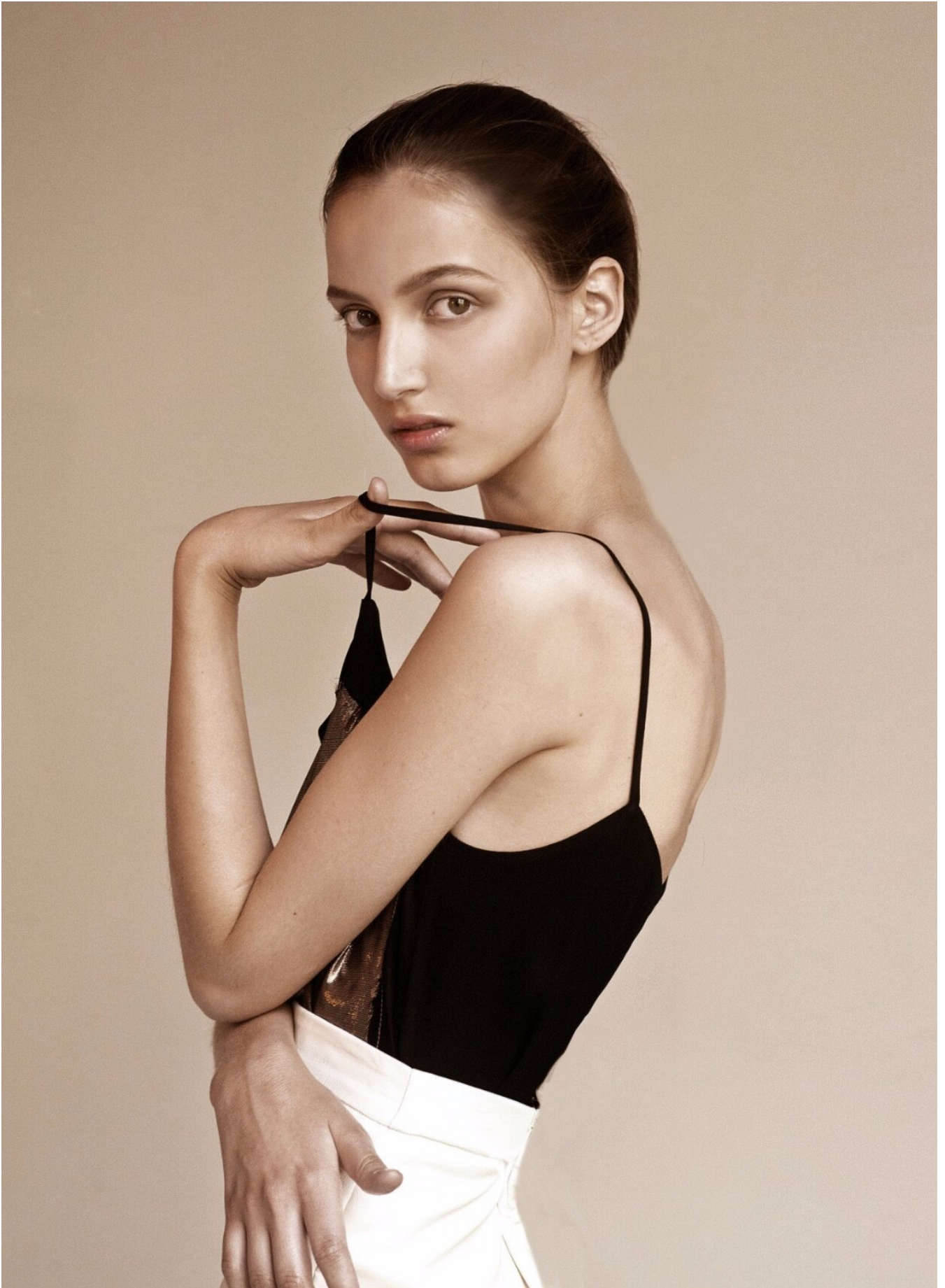
GO:FE:FE



LAISAN

HEIGHT: 178 CHEST: 80 WAIST: 60 HAIR: BROWN EYES: GREEN SUIT: SHOES: 40

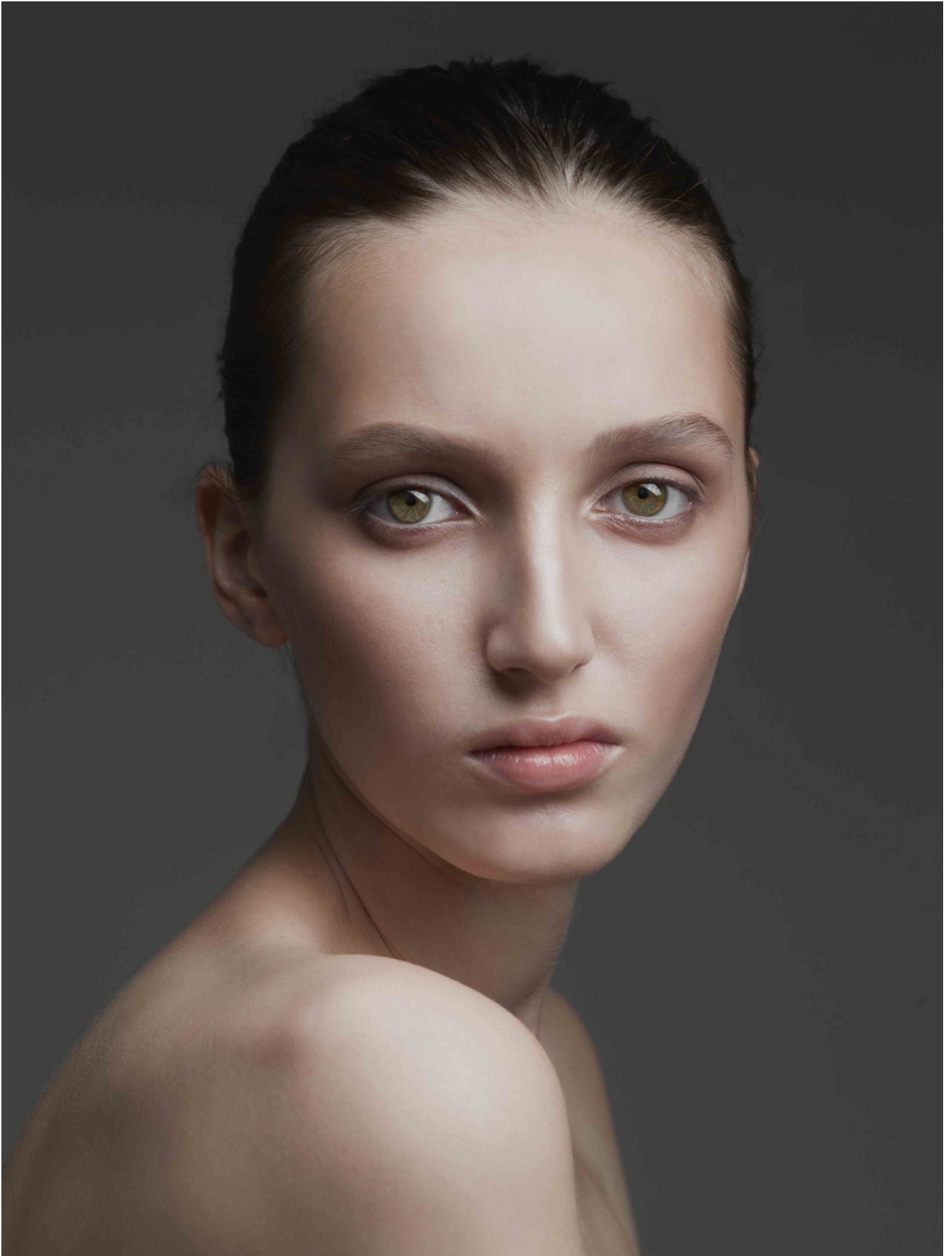
DAMAN



LAISAN

HEIGHT: 178 CHEST: 80 WAIST: 60 HAIR: BROWN EYES: GREEN SUIT: SHOES: 40

DAMAN



LAIAN

HEIGHT: 178 CHEST: 80 WAIST: 60 HAIR: BROWN EYES: GREEN SUIT: SHOES: 40

DAMAN



潮流运动风

鹿王运动系列羊绒衫 随心而动

LAISAN

HEIGHT: 178 CHEST: 80 WAIST: 60 HAIR: BROWN EYES: GREEN SUIT: SHOES: 40

DAMAN



LAISAN

HEIGHT: 178 CHEST: 80 WAIST: 60 HAIR: BROWN EYES: GREEN SUIT: SHOES: 40

DAMAN



LAISAN

HEIGHT: 178 CHEST: 80 WAIST: 60 HAIR: BROWN EYES: GREEN SUIT: SHOES: 40

DAMAN



LAISAN

HEIGHT: 178 CHEST: 80 WAIST: 60 HAIR: BROWN EYES: GREEN SUIT: SHOES: 40

DAMAN



LAIAN

HEIGHT: 178 CHEST: 80 WAIST: 60 HAIR: BROWN EYES: GREEN SUIT: SHOES: 40

DAMAN

LAIAN

HEIGHT: 178 CHEST: 80 WAIST: 60 HAIR: BROWN EYES: GREEN SUIT: SHOES: 40