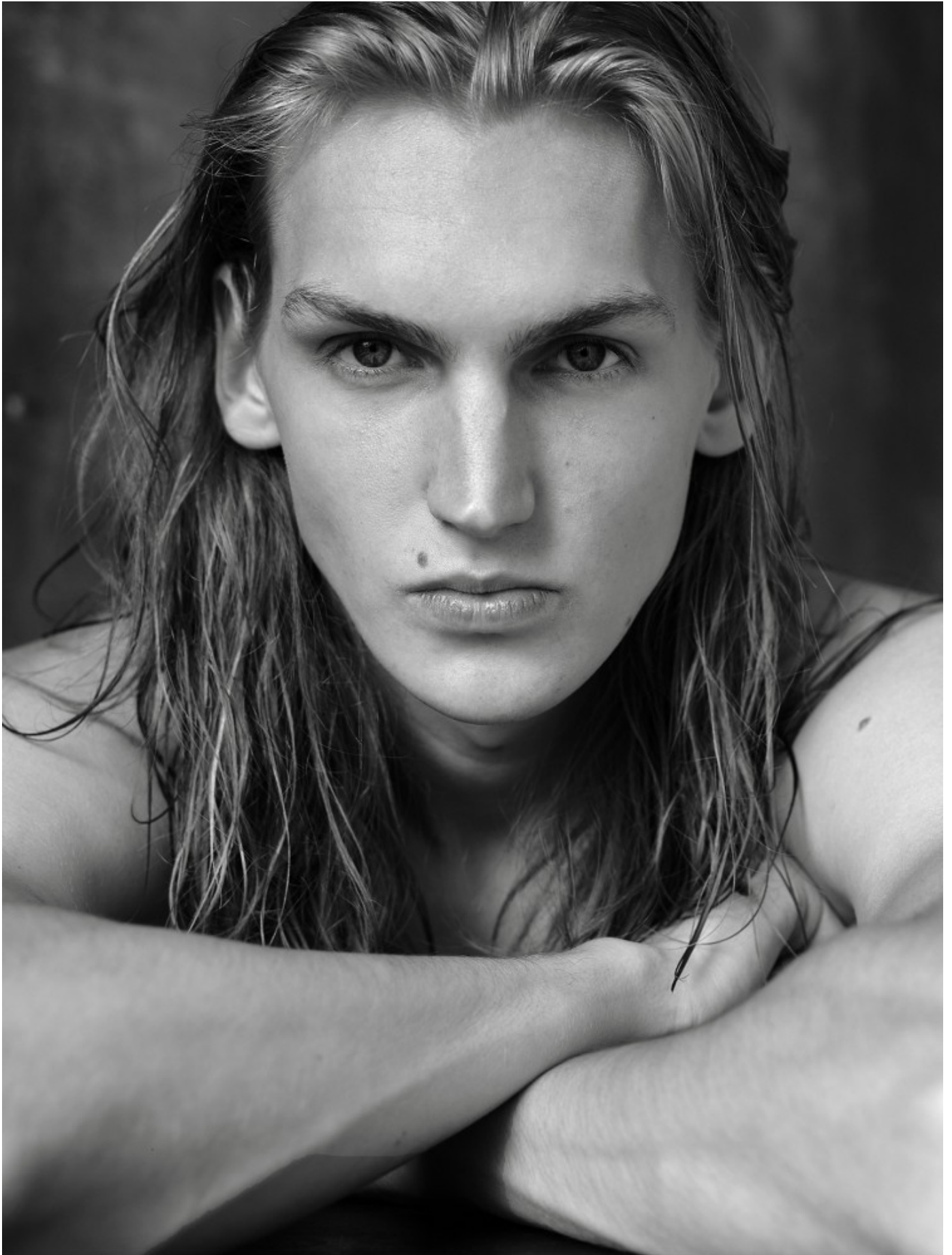


DAMAN



KRIS KERI

HEIGHT: 190 CHEST: 88 WAIST: 73 HAIR: BLOND EYES: BLUE SUIT: SHOES: 45

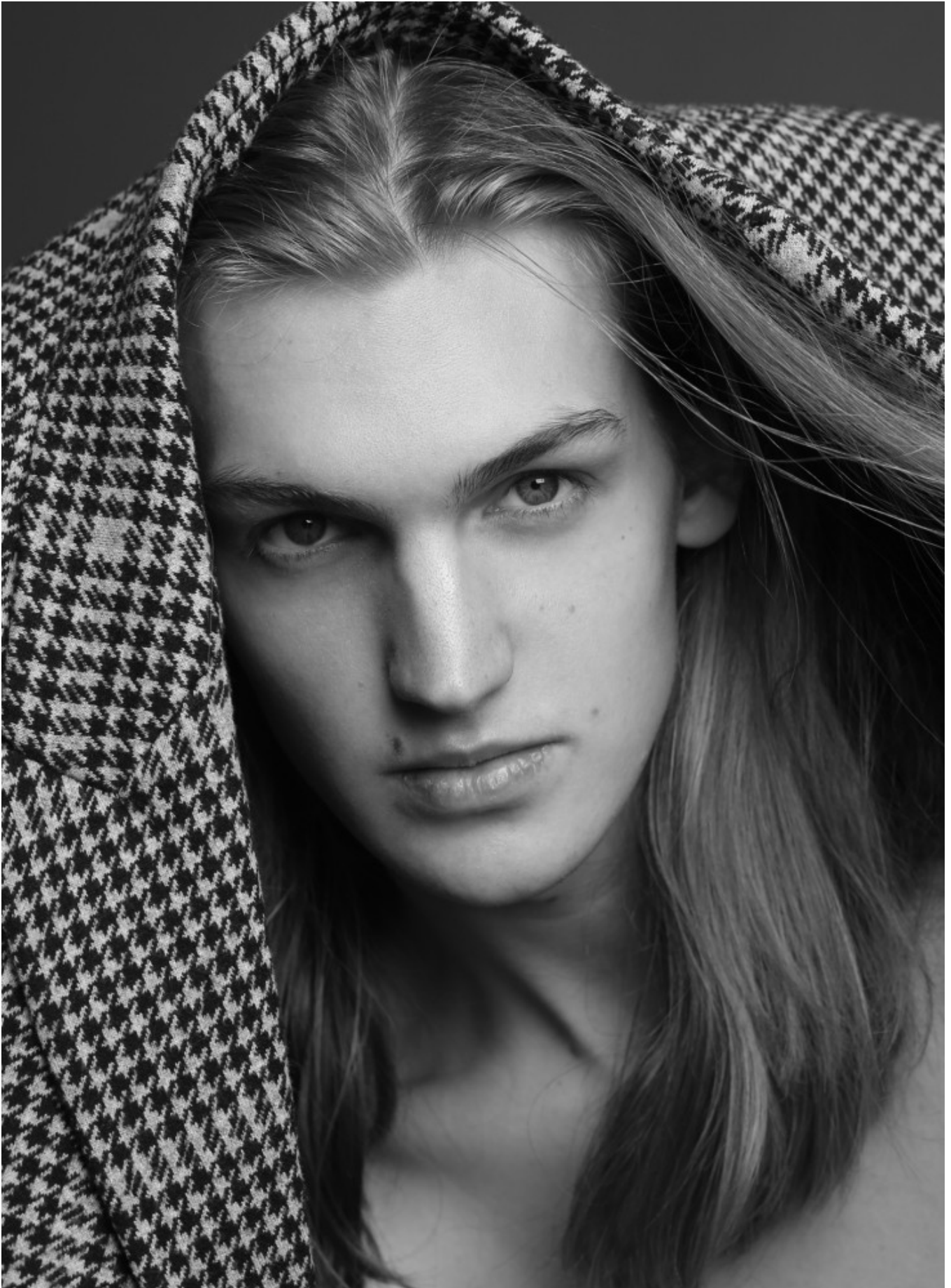
DAMAN



KRIS KERI

HEIGHT: 190 CHEST: 88 WAIST: 73 HAIR: BLOND EYES: BLUE SUIT: SHOES: 45

DAMAN



KRIS KERI

HEIGHT: 190 CHEST: 88 WAIST: 73 HAIR: BLOND EYES: BLUE SUIT: SHOES: 45

DAMAN



Kris: casaco em lã, €1.595, **Stella McCartney**. Casaco em algodão, €49,99, **Mango**. Camisola em algodão, **Fred Perry**. Camisa em popelina, **Salvatore Ferragamo**. Calças em lã, €480, **Dries Van Noten**. Botas em pele, €490, **Alexander McQueen**. **Yakiv:** 3 em 1 *Layer Trench* em denim, €3.350, camisa em lã, €2.300, calças em denim, €950, tudo **Louis Vuitton**. Sapatos em pele, **Salvatore Ferragamo**.

KRIS KERI

HEIGHT: 190 CHEST: 88 WAIST: 73 HAIR: BLOND EYES: BLUE SUIT: SHOES: 45

DAMAN



KRIS KERI

HEIGHT: 190 CHEST: 88 WAIST: 73 HAIR: BLOND EYES: BLUE SUIT: SHOES: 45

DAMAN



KRIS KERI

HEIGHT: 190 CHEST: 88 WAIST: 73 HAIR: BLOND EYES: BLUE SUIT: SHOES: 45

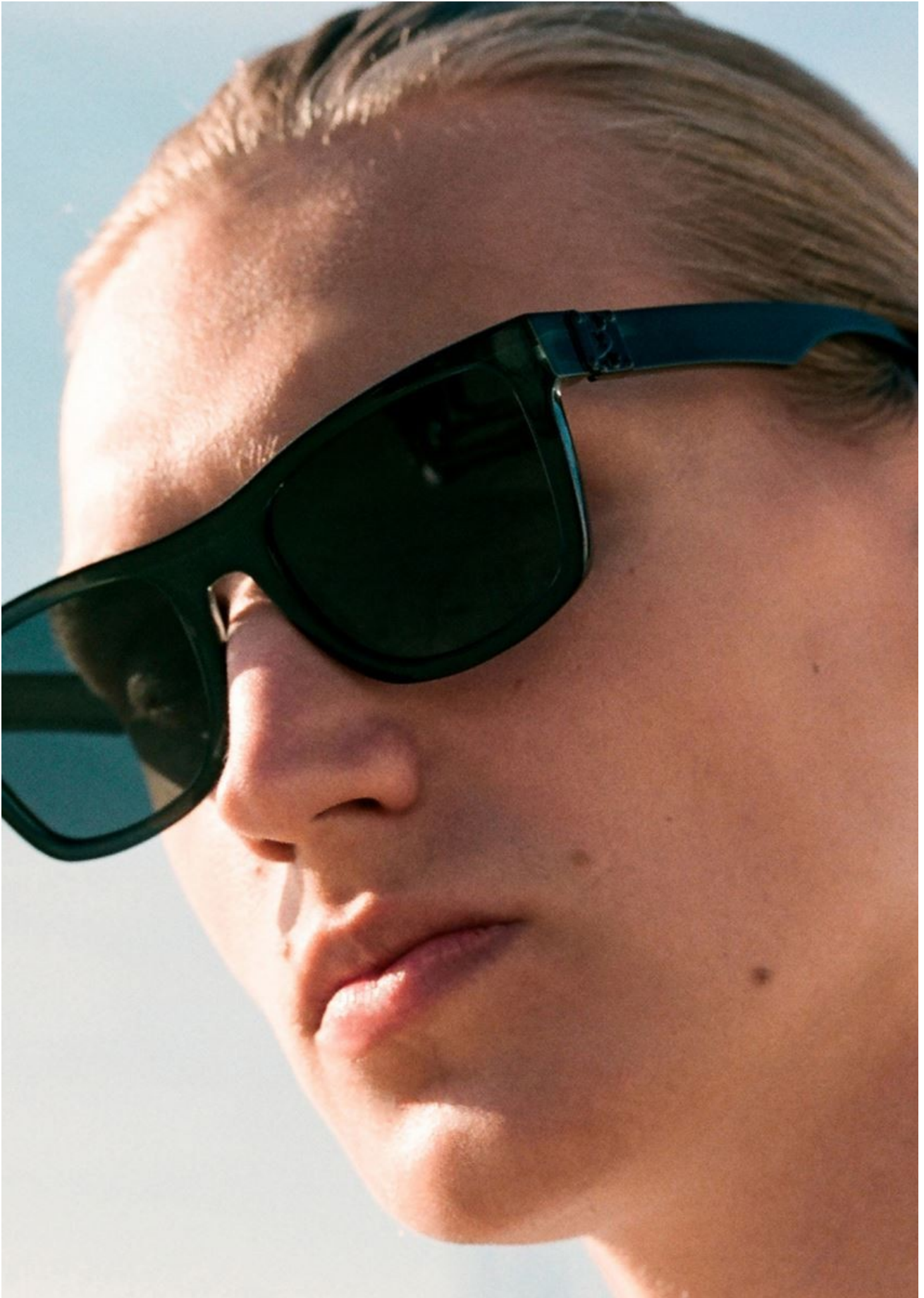
DAMAN



KRIS KERI

HEIGHT: 190 CHEST: 88 WAIST: 73 HAIR: BLOND EYES: BLUE SUIT: SHOES: 45

DAMAN



KRIS KERI

HEIGHT: 190 CHEST: 88 WAIST: 73 HAIR: BLOND EYES: BLUE SUIT: SHOES: 45

DAMAN



KRIS KERI

HEIGHT: 190 CHEST: 88 WAIST: 73 HAIR: BLOND EYES: BLUE SUIT: SHOES: 45

DAMAN



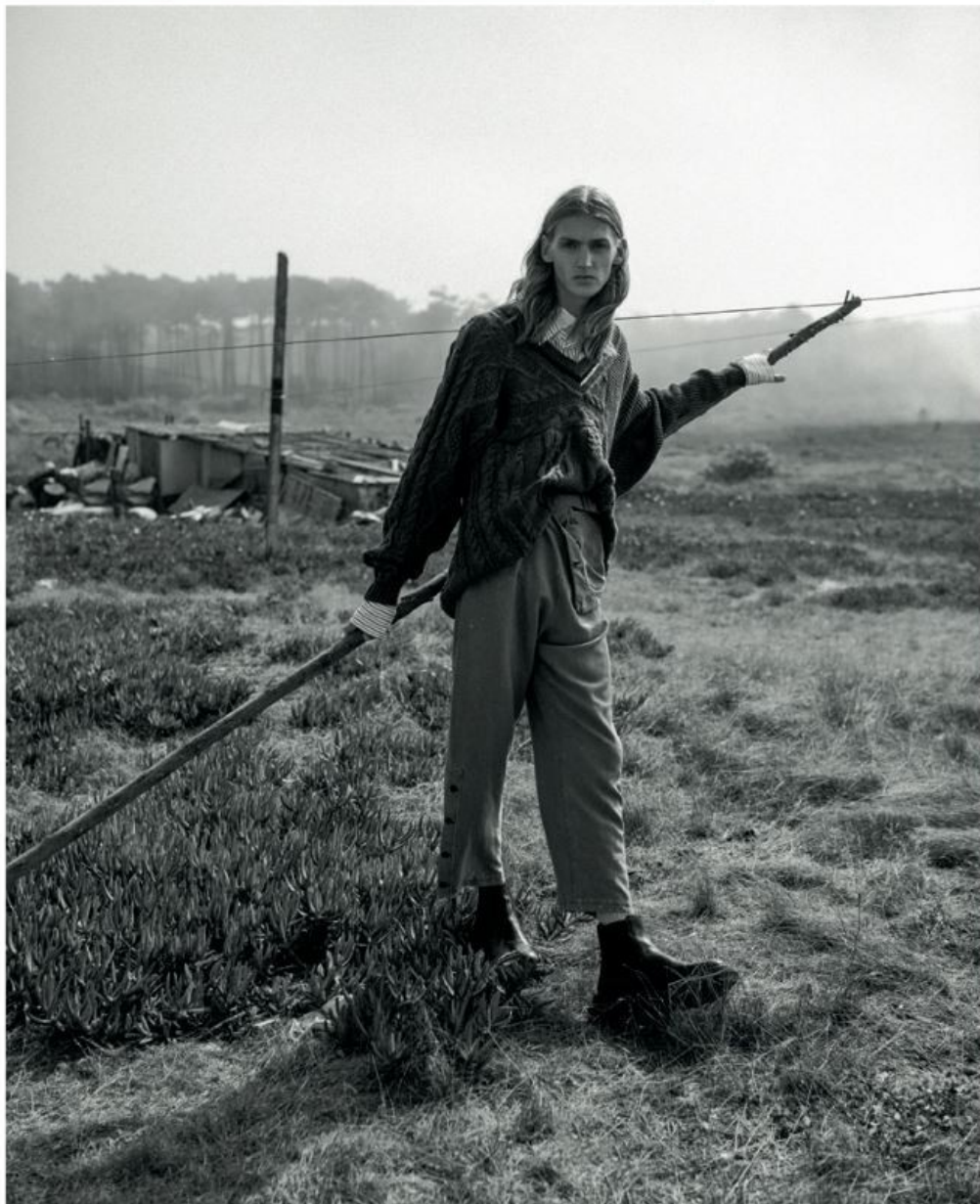
KRIS KERI

HEIGHT: 190 CHEST: 88 WAIST: 73 HAIR: BLOND EYES: BLUE SUIT: SHOES: 45

DAMAN



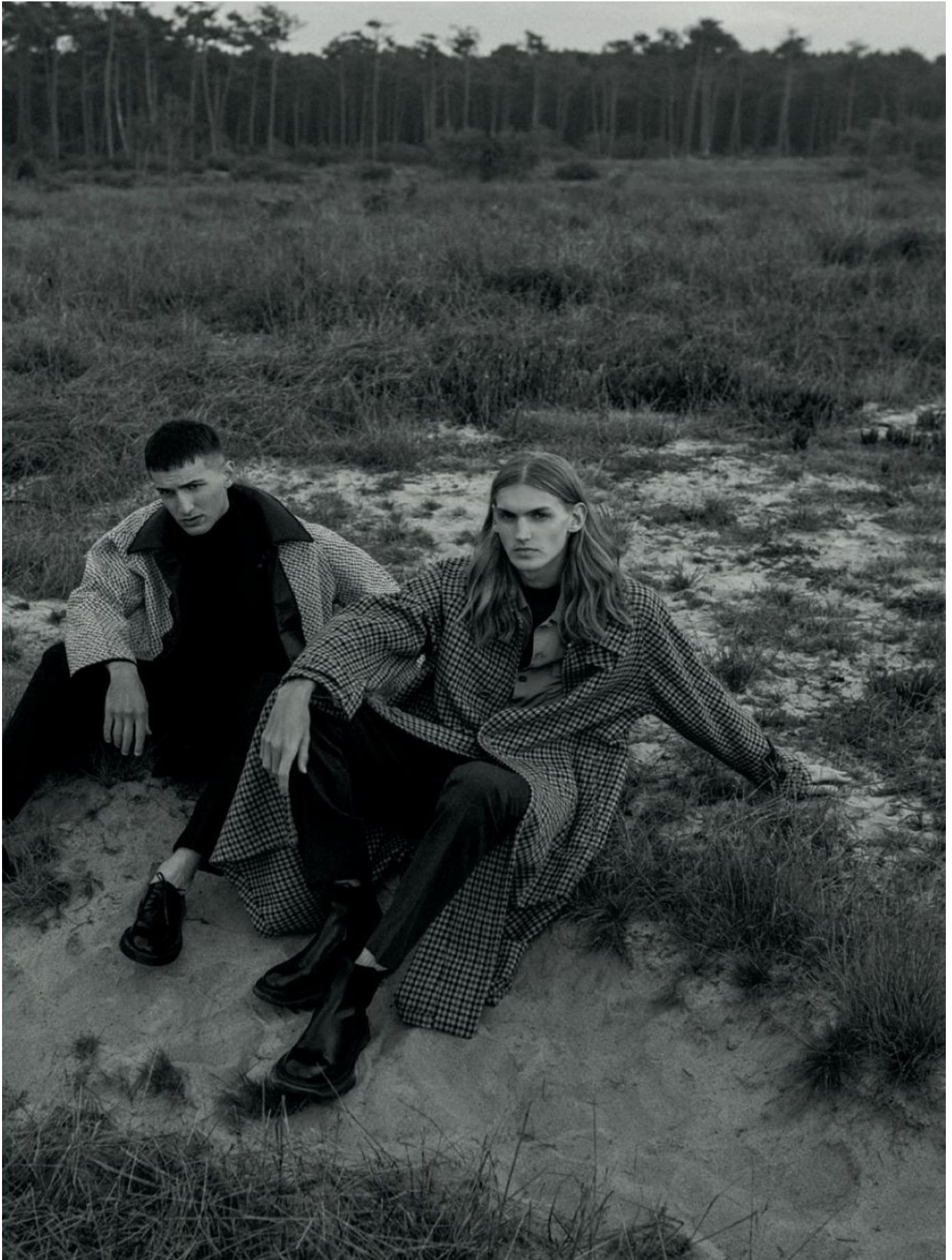
Camisola em algodão, **Nycole**.
Camisa em algodão, €260, **Ami
Alexandre Mattiussi**. Camisa em
algodão, **Barbour**. Calças em seda,
€1.339, **Rochas**. Botas em pele,
€490, **Alexander McQueen**.
Na página ao lado, capa em popelina,
camisa em lã, calças em lã, tudo
Valentino – Undercover. Camisola
em lã, €49,95, **Massimo Dutti**.



KRIS KERI

HEIGHT: 190 CHEST: 88 WAIST: 73 HAIR: BLOND EYES: BLUE SUIT: SHOES: 45

DAMAN



KRIS KERI

HEIGHT: 190 CHEST: 88 WAIST: 73 HAIR: BLOND EYES: BLUE SUIT: SHOES: 45

DAMAN



KRIS KERI

HEIGHT: 190 CHEST: 88 WAIST: 73 HAIR: BLOND EYES: BLUE SUIT: SHOES: 45

DAMAN



KRIS KERI

HEIGHT: 190 CHEST: 88 WAIST: 73 HAIR: BLOND EYES: BLUE SUIT: SHOES: 45

DAMAN



KRIS KERI

HEIGHT: 190 CHEST: 88 WAIST: 73 HAIR: BLOND EYES: BLUE SUIT: SHOES: 45

DAMAN



189

KRIS KERI

HEIGHT: 190 CHEST: 88 WAIST: 73 HAIR: BLOND EYES: BLUE SUIT: SHOES: 45

DAMAN



KRIS KERI

HEIGHT: 190 CHEST: 88 WAIST: 73 HAIR: BLOND EYES: BLUE SUIT: SHOES: 45

DAMAN



KRIS KERI

HEIGHT: 190 CHEST: 88 WAIST: 73 HAIR: BLOND EYES: BLUE SUIT: SHOES: 45

DAMAN



KRIS KERI

HEIGHT: 190 CHEST: 88 WAIST: 73 HAIR: BLOND EYES: BLUE SUIT: SHOES: 45

DAMAN



KRIS KERI

HEIGHT: 190 CHEST: 88 WAIST: 73 HAIR: BLOND EYES: BLUE SUIT: SHOES: 45



IN QUESTA PAGINA. DA SINISTRA. IN ALTO E IN SENSO ORARIO. PER QUINTIN VAN KONKELENBERG@SUCCESS MODELS PARIS. TOTAL LOOK MONCLER GAMME BLEU. ORECCHINI BUCCELLATI. PER KRIS KERI@BANANAS MODELS PARIS. CAPPOTTO DOPPIOPETTO, GIVENCHY BY RICCARDO TISCI; CAPPELLO DI PELLICCIA ADAGIATO SULLE SPALLE, DSQUARED2. ANELLI REPOSSI, ANELLO AL MIGNOLO BULGARI. PER FILIP ROSÉEN@NISCH MODELS. CAPPOTTO PRADA. ORECCHINO E COLLANA, BUCCELLATI; BORSA A TRACOLLA BALENCIAGA. PER LINDA HELENA@IMG PARIS. GIACCA E GILET, HAIDER ACKERMANN. ORECCHINO PIAGET, ANELLO DE GRISOGONO.

KRIS KERI

HEIGHT: 190 CHEST: 88 WAIST: 73 HAIR: BLOND EYES: BLUE SUIT: SHOES: 45

DAMAN



KRIS KERI

HEIGHT: 190 CHEST: 88 WAIST: 73 HAIR: BLOND EYES: BLUE SUIT: SHOES: 45

DAMAN



KRIS KERI

HEIGHT: 190 CHEST: 88 WAIST: 73 HAIR: BLOND EYES: BLUE SUIT: SHOES: 45

DAMAN



KRIS KERI

HEIGHT: 190 CHEST: 88 WAIST: 73 HAIR: BLOND EYES: BLUE SUIT: SHOES: 45

DAMAN



KRIS KERI

HEIGHT: 190 CHEST: 88 WAIST: 73 HAIR: BLOND EYES: BLUE SUIT: SHOES: 45

DAMAN



KRIS KERI

HEIGHT: 190 CHEST: 88 WAIST: 73 HAIR: BLOND EYES: BLUE SUIT: SHOES: 45

DAMAN

Blurred Lines

Set the standards and stereotypes aside,
and let ambiguity reign

PHOTOS CHER NEM STYLING BRYAN HO



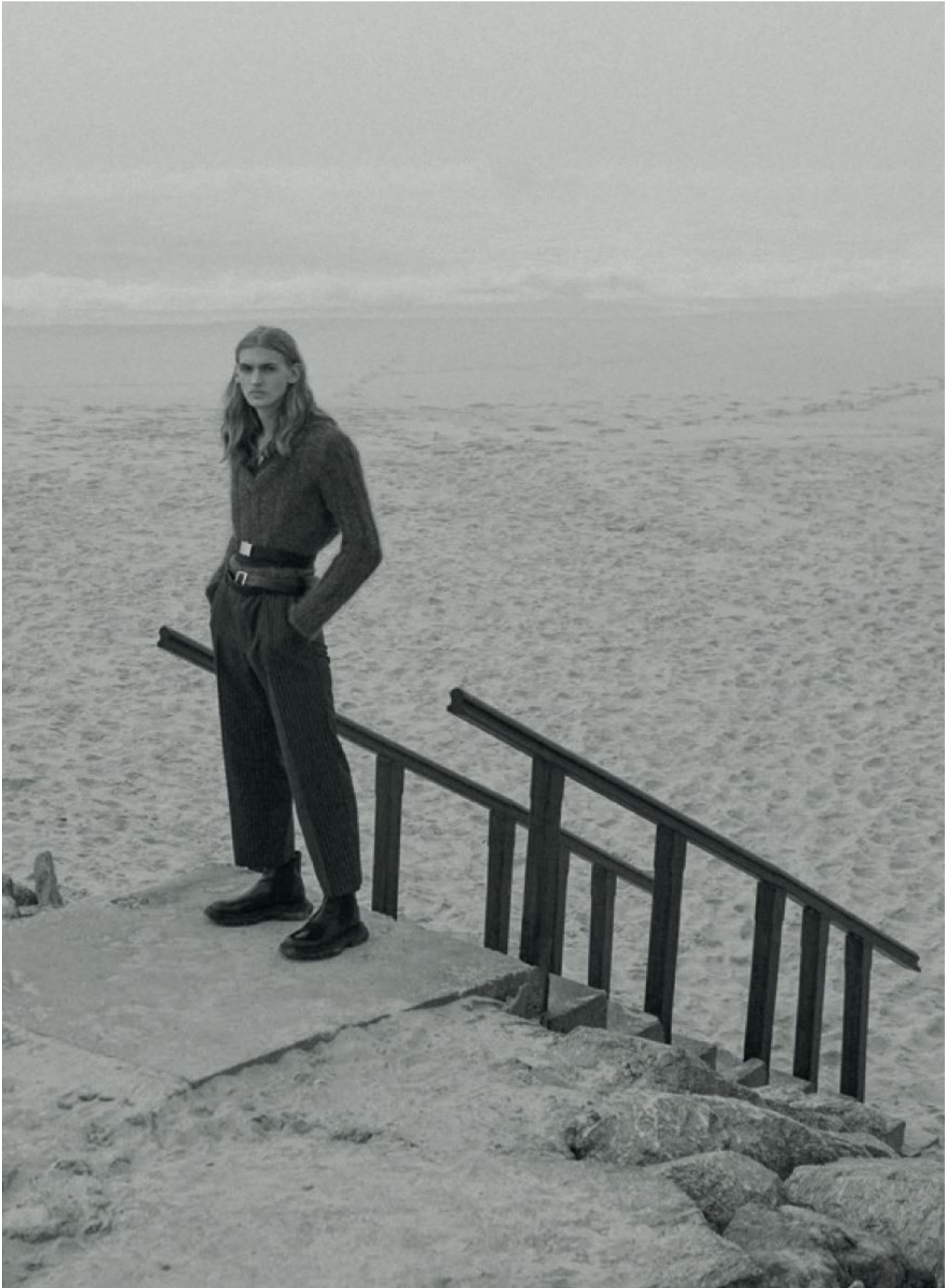
Cotton top and nylon/cotton-blend shorts (opposite), Raf Simons

92 AUGUSTMAN

KRIS KERI

HEIGHT: 190 CHEST: 88 WAIST: 73 HAIR: BLOND EYES: BLUE SUIT: SHOES: 45

DAMAN



KRIS KERI

HEIGHT: 190 CHEST: 88 WAIST: 73 HAIR: BLOND EYES: BLUE SUIT: SHOES: 45

DAMAN



KRIS KERI

HEIGHT: 190 CHEST: 88 WAIST: 73 HAIR: BLOND EYES: BLUE SUIT: SHOES: 45

DAMAN



KRIS KERI

HEIGHT: 190 CHEST: 88 WAIST: 73 HAIR: BLOND EYES: BLUE SUIT: SHOES: 45

DAMAN



KRIS KERI

HEIGHT: 190 CHEST: 88 WAIST: 73 HAIR: BLOND EYES: BLUE SUIT: SHOES: 45

DAMAN



KRIS KERI

HEIGHT: 190 CHEST: 88 WAIST: 73 HAIR: BLOND EYES: BLUE SUIT: SHOES: 45

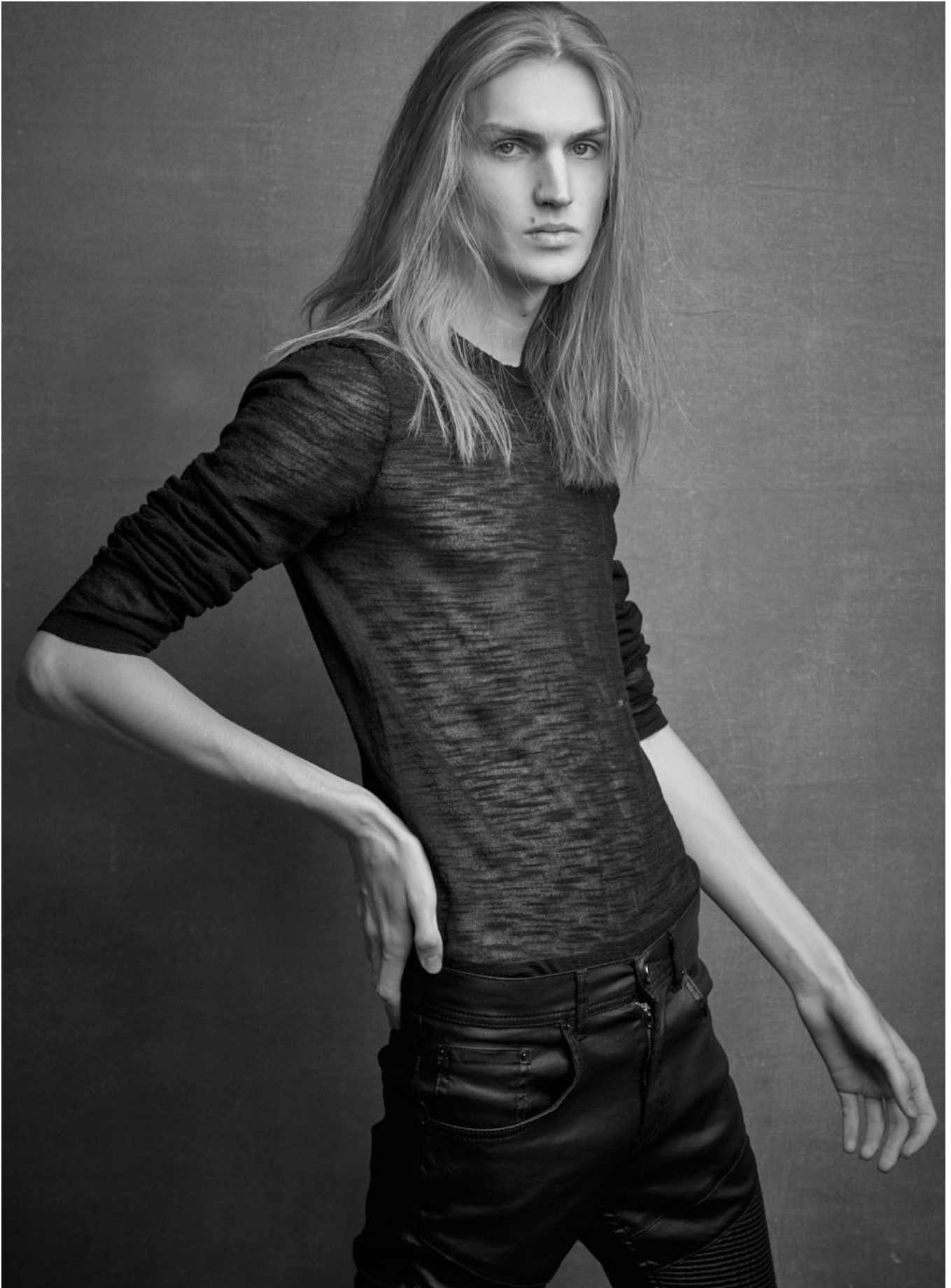
DAMAN



KRIS KERI

HEIGHT: 190 CHEST: 88 WAIST: 73 HAIR: BLOND EYES: BLUE SUIT: SHOES: 45

DAMAN



KRIS KERI

HEIGHT: 190 CHEST: 88 WAIST: 73 HAIR: BLOND EYES: BLUE SUIT: SHOES: 45

DAMAN



KRIS KERI

HEIGHT: 190 CHEST: 88 WAIST: 73 HAIR: BLOND EYES: BLUE SUIT: SHOES: 45

DAMAN



KRIS KERI

HEIGHT: 190 CHEST: 88 WAIST: 73 HAIR: BLOND EYES: BLUE SUIT: SHOES: 45

DAMAN

KRIS KERI

HEIGHT: 190 CHEST: 88 WAIST: 73 HAIR: BLOND EYES: BLUE SUIT: SHOES: 45