

DAMAN



DIOGO DE LA MAZA

HEIGHT: 182 CHEST: 95 WAIST: 74 HAIR: D.BLOND EYES: BLUE SUIT: 48S SHOES: 43

DAMAN



DIOGO DE LA MAZA

HEIGHT: 182 CHEST: 95 WAIST: 74 HAIR: D.BLOND EYES: BLUE SUIT: 48S SHOES: 43

DAMAN



DIOGO DE LA MAZA

HEIGHT: 182 CHEST: 95 WAIST: 74 HAIR: D.BLOND EYES: BLUE SUIT: 48S SHOES: 43

DAMAN



DIOGO DE LA MAZA

HEIGHT: 182 CHEST: 95 WAIST: 74 HAIR: D.BLOND EYES: BLUE SUIT: 48S SHOES: 43

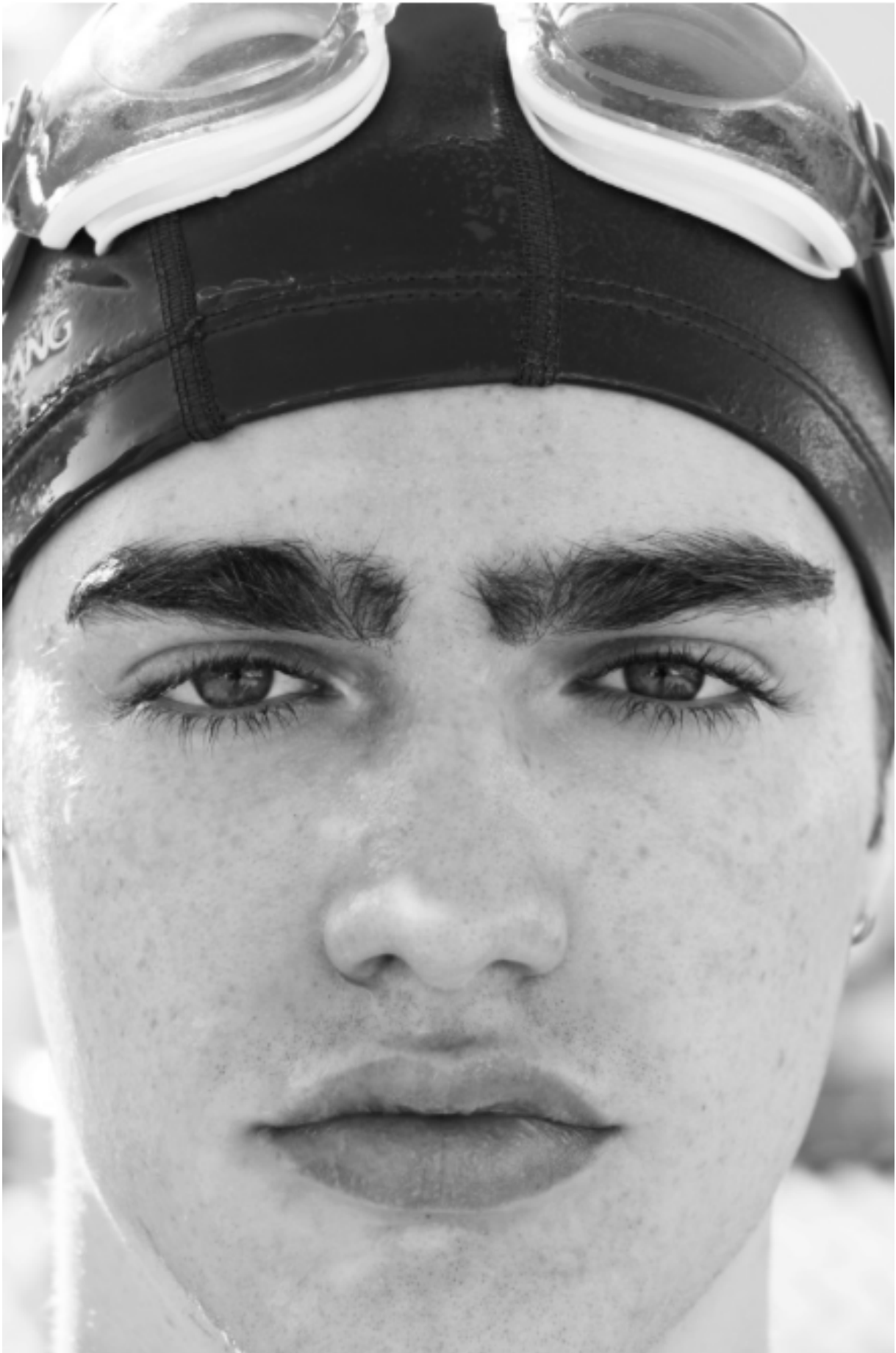
DAMAN



DIOGO DE LA MAZA

HEIGHT: 182 CHEST: 95 WAIST: 74 HAIR: D.BLOND EYES: BLUE SUIT: 48S SHOES: 43

DAMAN



DIOGO DE LA MAZA

HEIGHT: 182 CHEST: 95 WAIST: 74 HAIR: D.BLOND EYES: BLUE SUIT: 48S SHOES: 43

DAMAN



DIOGO DE LA MAZA

HEIGHT: 182 CHEST: 95 WAIST: 74 HAIR: D.BLOND EYES: BLUE SUIT: 48S SHOES: 43

DAMAN



DIOGO DE LA MAZA

HEIGHT: 182 CHEST: 95 WAIST: 74 HAIR: D.BLOND EYES: BLUE SUIT: 48S SHOES: 43

DAMAN



DIOGO DE LA MAZA

HEIGHT: 182 CHEST: 95 WAIST: 74 HAIR: D.BLOND EYES: BLUE SUIT: 48S SHOES: 43

Gurú:



MODELOS: **Diego de la Maza** (UNO MODELS) Y **Beltrán de Trapo** (MAQUILLAJE Y PELLUQUERIA **Carmen de Juan** (X ARTIST MANAGEMENT))
ASISTENTE DE ESTILISMO: **Blanca Hidalgo** SET DESIGNER: **Jorge Parra Flores** DANDELION (WWW.DANDELION-FLORES.COM)

En esta página, Beltrán con traje de **Dolce & Gabbana** y Diego con pijama de **House of Bow** y chistera *vintage*.
En la página siguiente, Diego con *total look* de **BOSS**.

DIOGO DE LA MAZA

HEIGHT: 182 CHEST: 95 WAIST: 74 HAIR: D.BLOND EYES: BLUE SUIT: 48S SHOES: 43

DAMAN



DIOGO DE LA MAZA

HEIGHT: 182 CHEST: 95 WAIST: 74 HAIR: D.BLOND EYES: BLUE SUIT: 48S SHOES: 43

DAMAN



DIOGO DE LA MAZA

HEIGHT: 182 CHEST: 95 WAIST: 74 HAIR: D.BLOND EYES: BLUE SUIT: 48S SHOES: 43

DAMAN



DIOGO DE LA MAZA

HEIGHT: 182 CHEST: 95 WAIST: 74 HAIR: D.BLOND EYES: BLUE SUIT: 48S SHOES: 43

DAMAN



DIOGO DE LA MAZA

HEIGHT: 182 CHEST: 95 WAIST: 74 HAIR: D.BLOND EYES: BLUE SUIT: 48S SHOES: 43

DAMAN



DIOGO DE LA MAZA

HEIGHT: 182 CHEST: 95 WAIST: 74 HAIR: D.BLOND EYES: BLUE SUIT: 48S SHOES: 43

DAMAN



DIOGO DE LA MAZA

HEIGHT: 182 CHEST: 95 WAIST: 74 HAIR: D.BLOND EYES: BLUE SUIT: 48S SHOES: 43

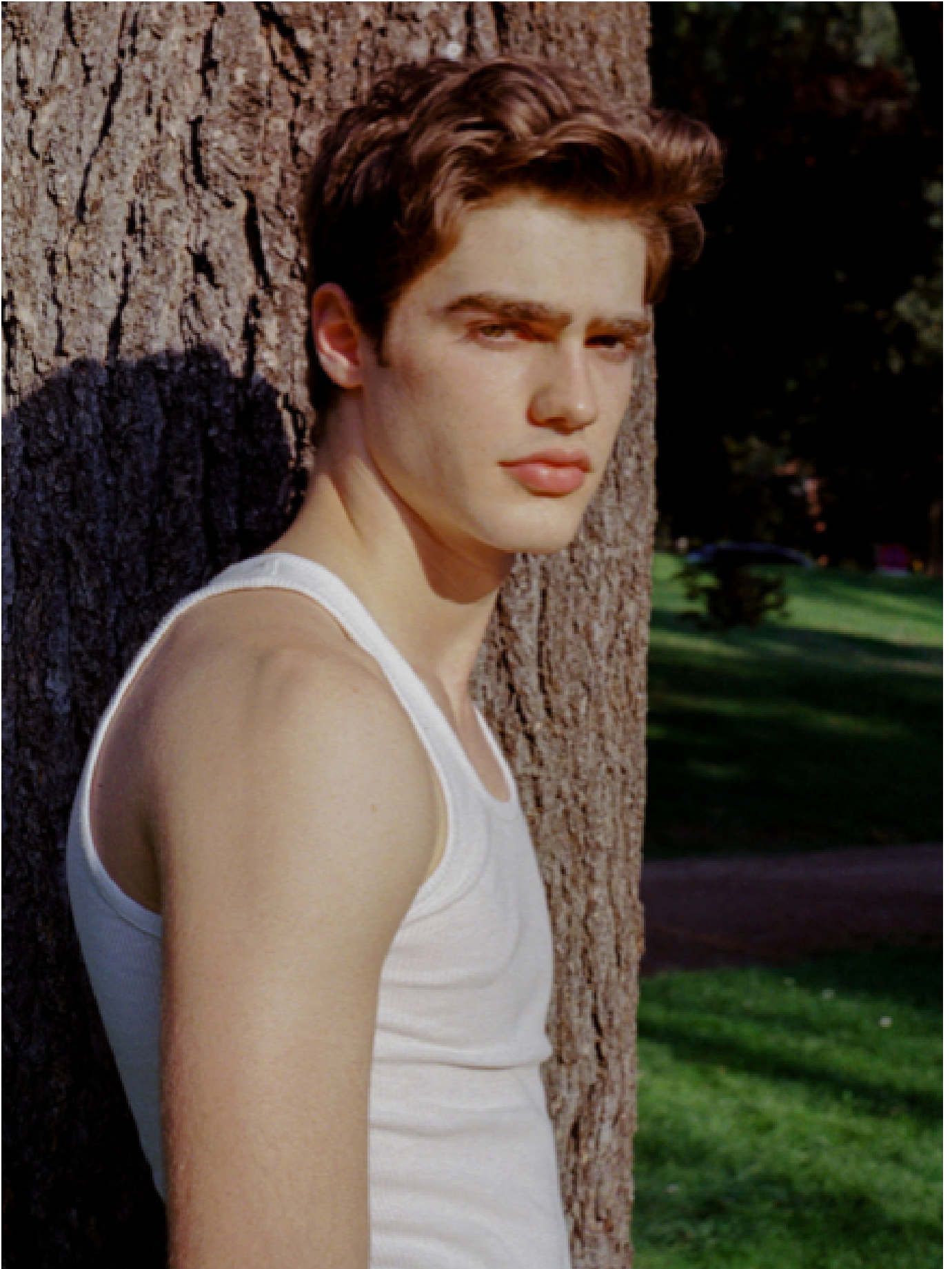


En esta página, ambos con *total look* de **Palomo Spain**. En la página anterior, Beltrán con abrigo de **Hermès**.

DIOGO DE LA MAZA

HEIGHT: 182 CHEST: 95 WAIST: 74 HAIR: D.BLOND EYES: BLUE SUIT: 48S SHOES: 43

DAMAN



DIOGO DE LA MAZA

HEIGHT: 182 CHEST: 95 WAIST: 74 HAIR: D.BLOND EYES: BLUE SUIT: 48S SHOES: 43

DAMAN



DIOGO DE LA MAZA

HEIGHT: 182 CHEST: 95 WAIST: 74 HAIR: D.BLOND EYES: BLUE SUIT: 48S SHOES: 43

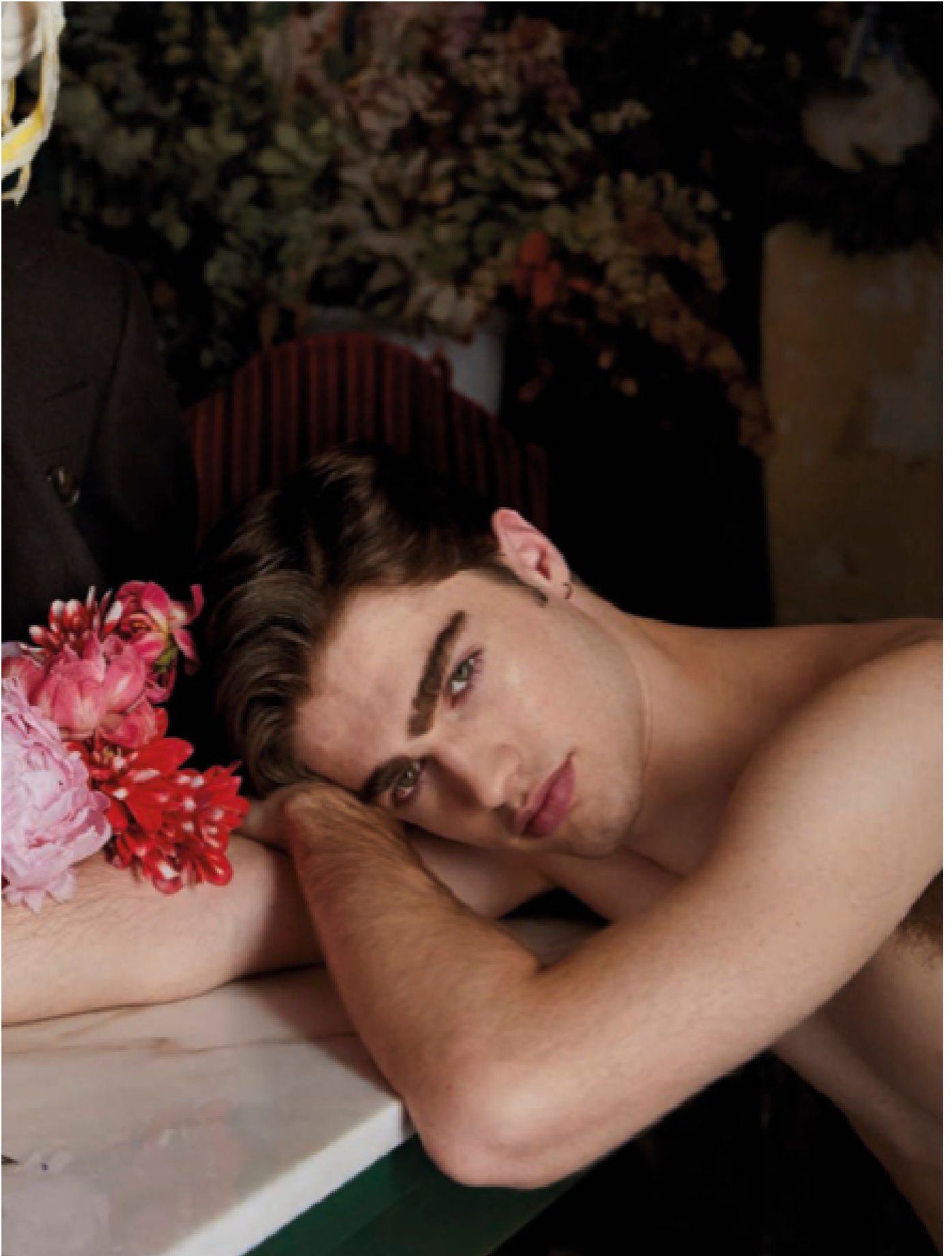
DAMAN



DIOGO DE LA MAZA

HEIGHT: 182 CHEST: 95 WAIST: 74 HAIR: D.BLOND EYES: BLUE SUIT: 48S SHOES: 43

DAMAN



DIOGO DE LA MAZA

HEIGHT: 182 CHEST: 95 WAIST: 74 HAIR: D.BLOND EYES: BLUE SUIT: 48S SHOES: 43

DAMAN



DIOGO DE LA MAZA

HEIGHT: 182 CHEST: 95 WAIST: 74 HAIR: D.BLOND EYES: BLUE SUIT: 48S SHOES: 43

DAMAN



Diogo de la Maza: total look LOEWE

DIOGO DE LA MAZA

HEIGHT: 182 CHEST: 95 WAIST: 74 HAIR: D.BLOND EYES: BLUE SUIT: 48S SHOES: 43

DAMAN



DIOGO DE LA MAZA

HEIGHT: 182 CHEST: 95 WAIST: 74 HAIR: D.BLOND EYES: BLUE SUIT: 48S SHOES: 43

DAMAN



DIOGO DE LA MAZA

HEIGHT: 182 CHEST: 95 WAIST: 74 HAIR: D.BLOND EYES: BLUE SUIT: 48S SHOES: 43

DAMAN

DIOGO DE LA MAZA

HEIGHT: 182 CHEST: 95 WAIST: 74 HAIR: D.BLOND EYES: BLUE SUIT: 48S SHOES: 43